

1. Production Introduction

Thank you very much for purchasing our products!
Properly operation can make sure more convenience!

1. Features:

- a. attractive and unique outline design
- b. Can diagnose the changing iridology fast and exactly.
- c. the image clarity can be adjustable.
- d. with full screen capture function, so convenient to diagnose iridology on the screen.
- e. easy and friendly-used.
- f. can save, printing the diagnosed report.
- g. single or double light alternative.
- h. can compare the right and left eye iris image.

2. Standard parts:

- a. host
- b. x30 lens
- c. handle-set
- d. USB cable
- e. AV line
- f. power source adaptor.



a. host



b. x30 lens



c. handset



d. USB cable



e. AV line



f. power source adaptor.

II . Installation and operation method

1. preparation:

- a. the PC should be installed with Vedio programm and Vedio software.
- b. the TV should be required color TV with AV input port.
- c. all the component are ready
 - a. host
 - b. x30 lens
 - c. handle-set
 - d. USB cable
 - e. AV line
 - f. power source adaptor.

2. The connection between TV and Iriscope

- a. Insert the handle cable to the INPUT port in the front side of the host.(the ↑ is upper side).
- b. connect any end of the AV signal cable to the AV-OUT port at the back side of the host. The other cable end connect to the VIDE-IN port at the back side of TV. Please view the following pictures.
- c. connect the host with standard 10V power source. (already equipped with iriscope)

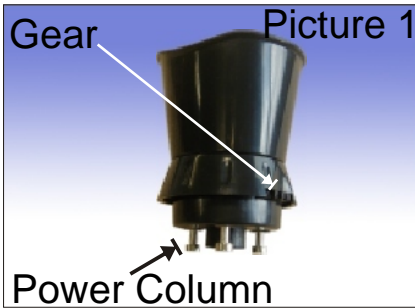


3. The connection between PC and Iriscope

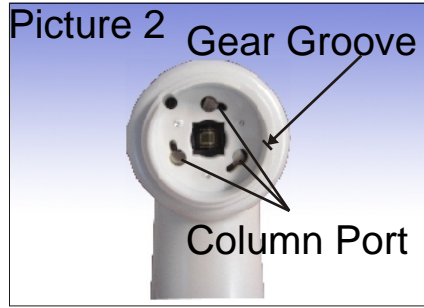
- a. Insert the handle cable to the INPUT port in the front of the host.(the ↑ is upper side).
- b. Insert the USB cable to PC USB port, and the other end connect to the host USB port. please view the following picture.



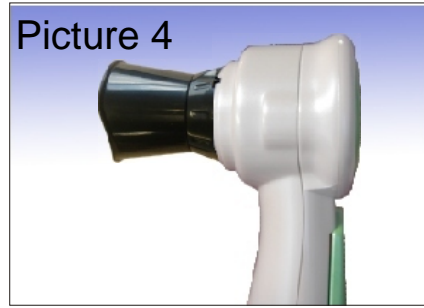
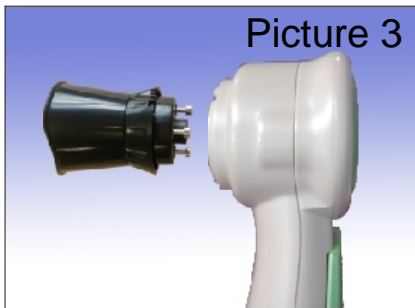
4. the installation of the Lens



Picture 1: check the lens back side, there should be three metal pillars and a gear which use to adjust the x30 lens focus.



Picture 2: check the side of the handle, there should be a slot for the gear for X30 lens focus adjustment, and three gear groove.



Please connect the Iris lens with the handset, be sure that the gear is straight to the gear groove, then turn the Iris lens clockwise to make sure the Iris lens and handset fix together!

5. Button function explanation:

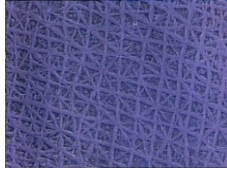
9888AU function button picture

- a. turn on the host power, press Capture key for 3 seconds to turn on the iriscopes, press right/left light to choose the light model; to aim the iriscopes with eyes, and adjust the gear to make sure the image effect.
- b. The gear on the lens can be used to adjust the clarity of the image.
- c. before taking left eye image, press LEFT EYE button, later press Capture key, and then press RIGHT EYE Button to taking right eye picture; after caught the right eye picture, press right/left eye image button to check the saved right and left eye pictures. If want to cancel the caught left eye picture, please press LEFT EYE button first and then press CAPTURE KEY.
- d. press Iris (skin) key change to Skin (iris) model to go on skin test.
- e. Press 3D key change to 3D model.

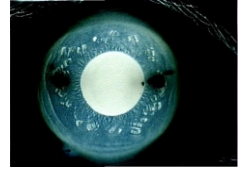


6. 3D function

Press 3D key change to 3D image model(the right picture is 3D picture)

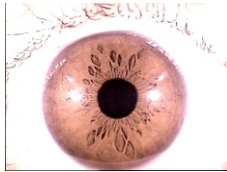


3D



3D

7. Iris/ Skin function:
Press Iris/Skin to change to Skin model (the right side are the iris and skin picture)



Iris



Skin

8. the iriscoep outline and spare parts:

